

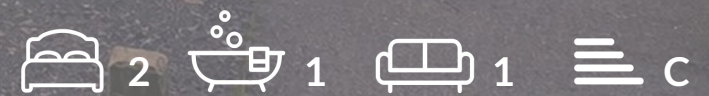


OAKFIELD



Oakleigh Road, Bexhill-On-Sea TN39 4PY

Price Guide £255,000



Oakleigh Road, Bexhill-On-Sea TN39 4PY

GUIDE PRICE £255,000 - £275,000

Situated in the highly desirable area of Little Common, this beautifully presented and spacious ground floor property offers a superb combination of style, comfort, and convenience within a well-maintained purpose-built block.

Ideal for a range of buyers, the property is in excellent decorative order throughout and is ready to move into.

With its own private entrance, the home opens into a welcoming inner hallway that leads to a generously sized lounge/diner.

This inviting space provides ample room for both living and dining furniture and flows effortlessly into a bright, south-facing sun room, which enjoys tranquil views over the rear garden — a perfect spot to relax or entertain.

The fitted kitchen is well-appointed with a comprehensive range of wall and base units, an integrated gas oven and hob, and space for additional appliances, making it both practical and attractive.

There are two good-sized bedrooms, each featuring fitted wardrobes that offer excellent storage solutions. The internal accommodation is further complemented by a stylish contemporary shower room and a separate WC.

Throughout the property, there are several useful built-in storage cupboards, as well as gas central heating and double glazing, ensuring year-round comfort.

Externally, the property benefits from a private, south-facing garden, perfect for outdoor enjoyment, along with a garage en-bloc providing secure parking or extra storage space.

Combining generous living space, a peaceful setting, and a sought-after location, this superb maisonette presents an ideal opportunity for those looking to enjoy a relaxed lifestyle with amenities close at hand.

An early viewing is strongly recommended to fully appreciate everything this exceptional home has to offer.





Lounge/Diner

20'10 x 13'0 (6.35m x 3.96m)

Kitchen

12'6 x 10'1 (3.81m x 3.07m)

Bedroom 1

13'11 x 11'11 (4.24m x 3.63m)

Bedroom 2

10'11 x 10'10 (3.33m x 3.30m)



Shower Room

6'9 x 5'11 (2.06m x 1.80m)

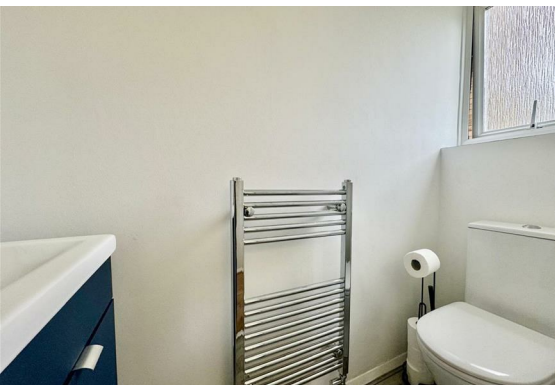
WC

5'11 x 2'7 (1.80m x 0.79m)

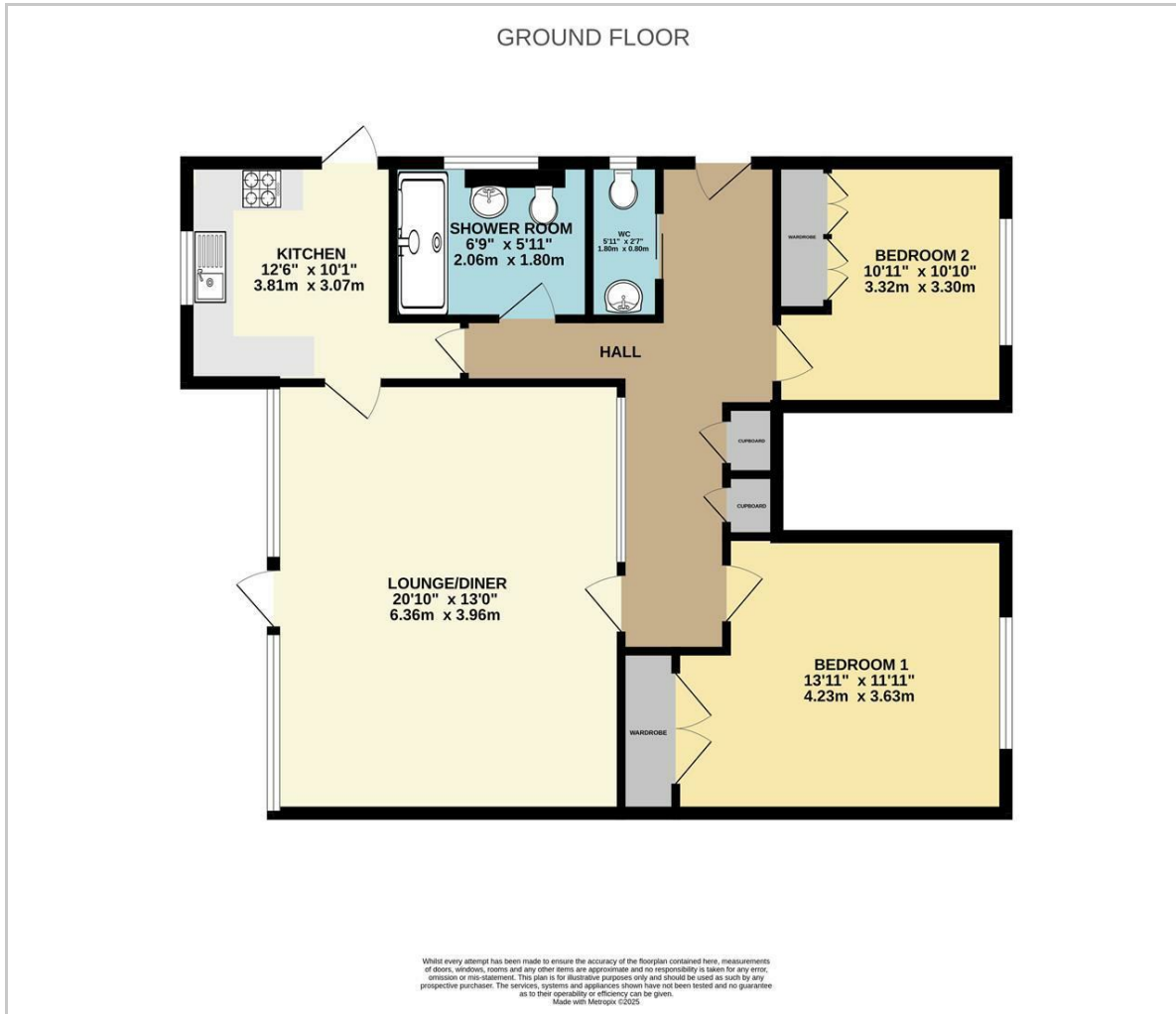
Council Tax Band - C

Lease Information

The seller advises that the property is offered as share of freehold and has approximately 970 years remaining. There is no service charge or ground rent. The maintenance is as and when. The agent has not had sight of confirmation documents and therefore the buyer is advised to obtain verification from their solicitors or surveyor.



Floor Plan



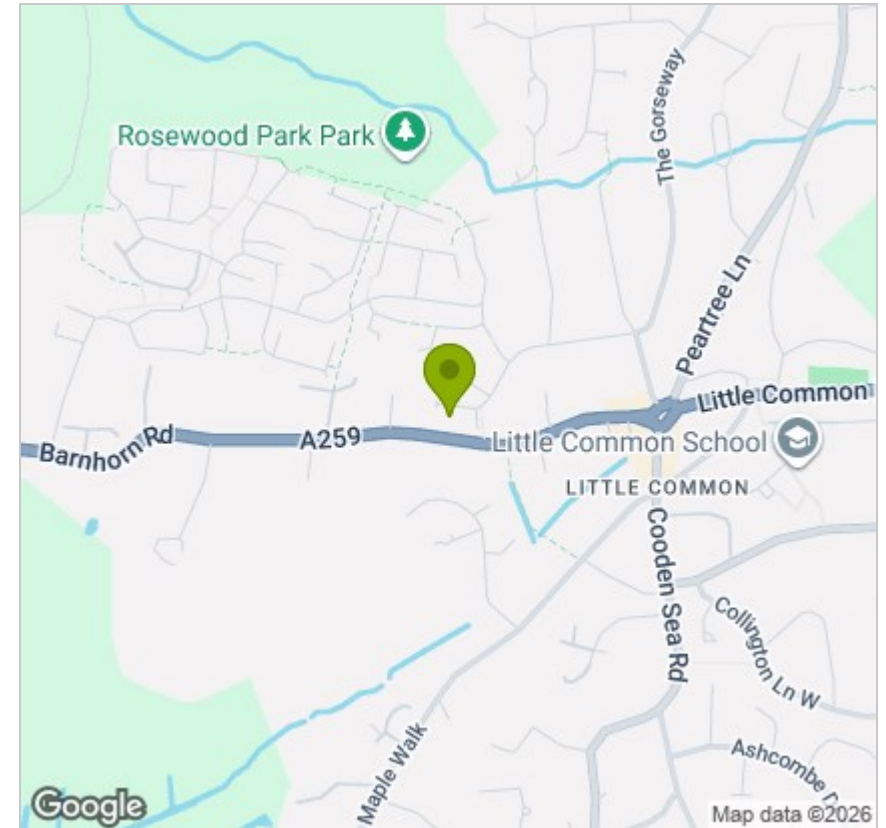
Viewing

Please contact us on 01424 224700 if you wish to arrange a viewing appointment for this property or require further information.

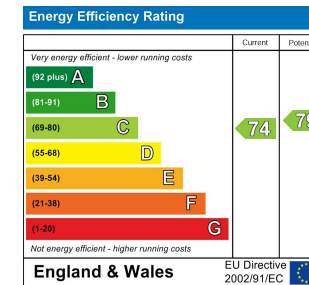
These particulars, whilst believed to be accurate are set out as a general outline only for guidance and do not constitute any part of an offer or contract. Intending purchasers should not rely on them as statements of representation of fact, but must satisfy themselves by inspection or otherwise as to their accuracy. No person in this firm's employment has the authority to make or give any representation or warranty in respect of the property.

12 Sackville Road, Bexhill on sea, East Sussex, TN39 3JL
Bexhill@oakfieldproperty.co.uk

Area Map



Energy Efficiency Graph



01424 224700
www.oakfieldproperty.co.uk